




March 2023

Sun	Mon	Tue	Wed	Thu	Fri	Sat
			1 RS OV Corned Beef & Cabbage Dinner	2 OES #140 Thursday Night @ the Rite	3 OES #201 LL	4
5	6 Crusade Commandery LZ OV	7 MZ OV Chili Cookoff	8 18th District M&W Assoc. & DLI (CC @ Audu- bon Temple)	9 MV	10 RS Happy Hour	11 L.O.R.E.
12  Daylight Savings	13 Van Hook Council	14 CC	15 RS EA° Simba Grotto	16 Thursday Night @ the Rite	17  AP OV LL	18
19	20 US OV	21	22 OES #140 AP EA°	23 Zerubbabel RA	24 Scottish Rite Dinner	25  Grand Master's Reception
26	27	28 LB OV	29	30 Thursday Night @ the Rite	31	

AP = Audubon-Parkside
CC = Collingswood-Cloud
LB = Campana de Libertad

LL = Laurel
LZ = Lazarus
MV = Merchantville

MZ = Mozart
RS = Rising Sun
US = USSNJ

This Month's & Upcoming 18th District Events

The following pages are intended to promote Masonic events and are offered as a courtesy by the 18th District Light to the event sponsors. The 18th District Light is not responsible for the accuracy of the information, event cancellations, nor for accepting reservations. For information or reservations for an event, please follow the instructions given in the event flyer.

Traveling



It's What We Do



Rising Sun Lodge
No. 15, F&AM

Official Visit of the OOGM

wednesday, march 1, 2023

haddonfield masonic temple 7:30 pm

Corned Beef & Cabbage Night

dinner at 6:30 pm


CORNEd beef & cabbage
salad, carrots, potatoes, rye bread

DESSERT SERVED AFTER COMMUNICATION

20\$ PER PERSON
(payable at the door)


RSVP TO Wb ALVIN F. BURGER
(afb5@comcast.net -or- 609-471-3816)
no later than Friday,
FEBRUARY 24th





Robert Hudgins' Chili Cook-Off

**Is your chili good
enough to beat the
best!**



Proceeds Benefit
Mozart Lodge
Charities

Mozart Lodge #121 Official Visit
Tuesday March 7, 2023

Cook-Off & Judging starts @ 6:15pm
\$20.00 for dinner / dessert / beverages
"Open to the Public"

Prizes

\$100 gift card & plaque to winner
Winner's Lodge gets traveling plaque

Entries RSVP by March 1, 2023

R.W. Keith W. Josepayt
Mozart.Sec@gmail.com





Rising Sun Lodge

Monthly SECOND Friday
Masonic Membership Potential

HAPPY HOUR

Friday,

March 10, 2023

5:30 pm to 8:30 pm



**Invite a guest who
might be interested
in Freemasonry!**

For further information contact Jeff Earnhart
at jearnha@gmail.com OR (856) 834-6854

18th Masonic District Lodge of Instruction Open House

**Wednesday, June 14, 2023
7:30 pm**

**Merchantville Masonic Temple
6926 Park Avenue, Merchantville, NJ**

Open to ALL!

**Come join us, and learn
about Freemasonry —**

- How it is structured.**
- How it functions.**
- How and why it is
open to all good men!**

Your Hosts

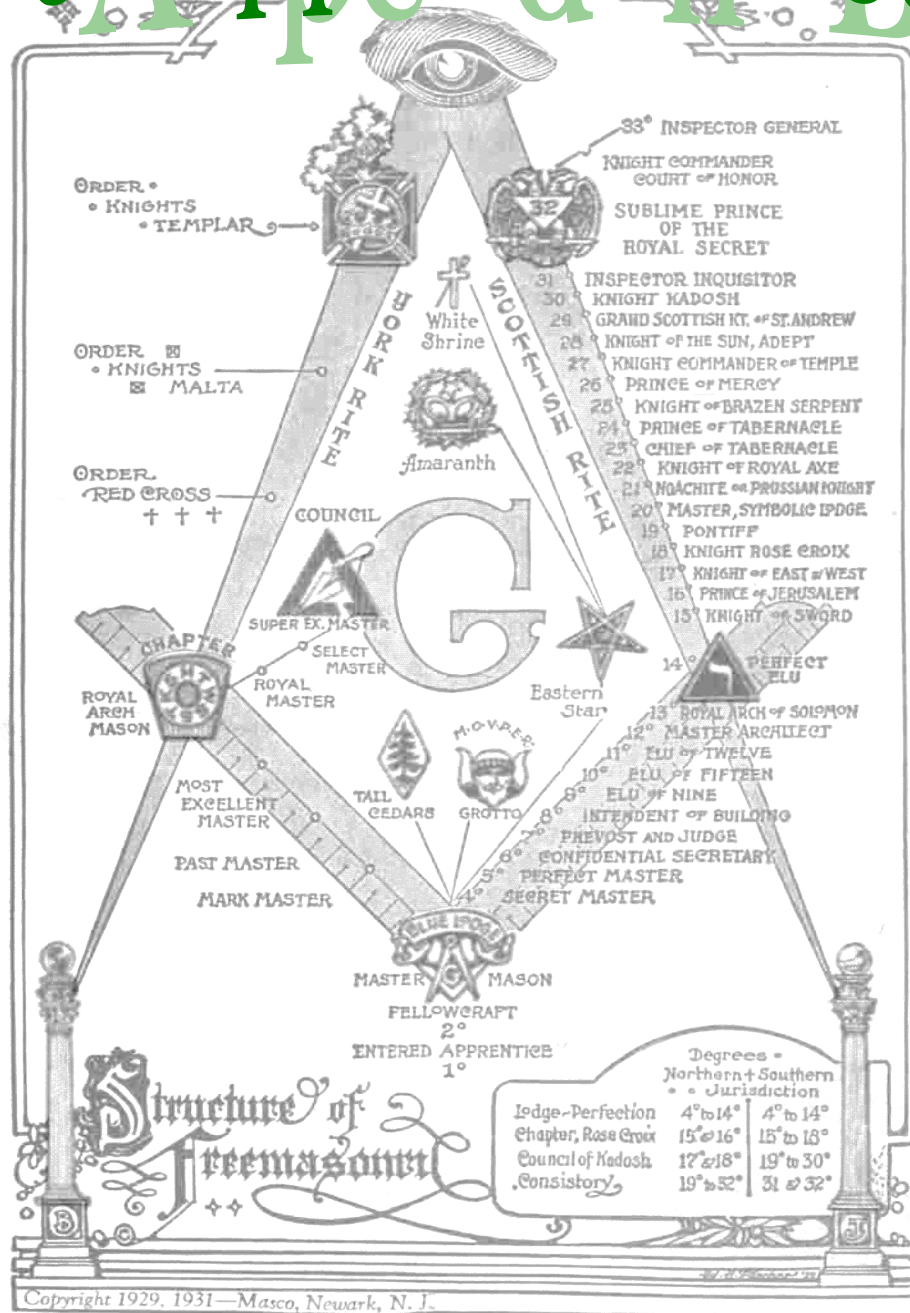
**The 18th Masonic
District of
New Jersey**

and

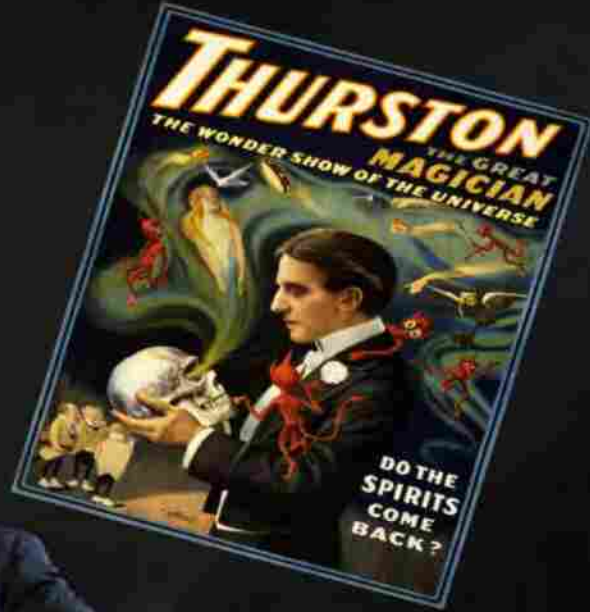
**Mozart Lodge
No. 121**

*MASONS! — Invite friends and family who
would like to learn more about what you do!*

Outside the 18th District GIGL & Appendant Bodies



Magicians and Freemasonry



Adoniram Lodge No. 80

Presents

Martin Bogardus

Wednesday, 7:30pm

March 1st 2023

321 Second Ave,
Lyndhurst, NJ 07071



Grand Master's Reception



Atlantic Lodge No. 221

Cordially invites you to attend the official visit
and Reception for

M.W. David L. Tucker

Grand Master of Masons for the State of New Jersey
and Chairman, Masonic Charity Foundation

Saturday, March 25th, 2023

Fellowship Center 1114 Oxmead Road, Burlington, NJ 08016

Reception 4:00 pm - Buffet Dinner after Reception

Mail To: R.W. William Anderson 3 Middle Lane East, Port Murray, NJ 07865

Questions? Contact R.W. Bill Anderson @ (201) 522-6374 or Email willama134@aol.com **Deadline:** March 10, 2023

Checks made payable to: "Team Tucker 2021"

No tickets will be issued

I would like _____ Reservations @ \$70 per person Total Enclosed: \$ _____

Please write the names of any additional guest/attendees that are part of this reservation on the back of this form or Seating Preference

Name: _____ Guest: _____

District: _____ Lodge: _____ Title: _____

Email: _____ Phone: _____

Check # _____

March 2023

© 2004 Blackwell Publishing Ltd *Journal of Internal Medicine* 255: 101–108

THE 2000 EDITION

100

The use of Kines, combined by good and positive, allow the same time in doing so. The softness is then reduced. Each of the four steps in Kines is: One, two, three, and four.

Downloaded by: National U. of Singapore

© 2004 Blackwell Publishing Ltd *Journal of Internal Medicine* 255: 111–117

1000 2000 3000

100

The threat of King Salman is notional for effects of many actions. He should not be too worried by anything more. Only when political and economic for King and Saudi.

1998, 1999, 2000, 2001, 2002, 2003, 2004, 2005, 2006, 2007, 2008, 2009, 2010, 2011, 2012, 2013, 2014, 2015, 2016, 2017, 2018, 2019, 2020, 2021, 2022, 2023, 2024, 2025, 2026, 2027, 2028, 2029, 2030, 2031, 2032, 2033, 2034, 2035, 2036, 2037, 2038, 2039, 2040, 2041, 2042, 2043, 2044, 2045, 2046, 2047, 2048, 2049, 2050, 2051, 2052, 2053, 2054, 2055, 2056, 2057, 2058, 2059, 2060, 2061, 2062, 2063, 2064, 2065, 2066, 2067, 2068, 2069, 2070, 2071, 2072, 2073, 2074, 2075, 2076, 2077, 2078, 2079, 2080, 2081, 2082, 2083, 2084, 2085, 2086, 2087, 2088, 2089, 2090, 2091, 2092, 2093, 2094, 2095, 2096, 2097, 2098, 2099, 2100, 2101, 2102, 2103, 2104, 2105, 2106, 2107, 2108, 2109, 2110, 2111, 2112, 2113, 2114, 2115, 2116, 2117, 2118, 2119, 2120, 2121, 2122, 2123, 2124, 2125, 2126, 2127, 2128, 2129, 2130, 2131, 2132, 2133, 2134, 2135, 2136, 2137, 2138, 2139, 2140, 2141, 2142, 2143, 2144, 2145, 2146, 2147, 2148, 2149, 2150, 2151, 2152, 2153, 2154, 2155, 2156, 2157, 2158, 2159, 2160, 2161, 2162, 2163, 2164, 2165, 2166, 2167, 2168, 2169, 2170, 2171, 2172, 2173, 2174, 2175, 2176, 2177, 2178, 2179, 2180, 2181, 2182, 2183, 2184, 2185, 2186, 2187, 2188, 2189, 2190, 2191, 2192, 2193, 2194, 2195, 2196, 2197, 2198, 2199, 2200, 2201, 2202, 2203, 2204, 2205, 2206, 2207, 2208, 2209, 2210, 2211, 2212, 2213, 2214, 2215, 2216, 2217, 2218, 2219, 2220, 2221, 2222, 2223, 2224, 2225, 2226, 2227, 2228, 2229, 2230, 2231, 2232, 2233, 2234, 2235, 2236, 2237, 2238, 2239, 2240, 2241, 2242, 2243, 2244, 2245, 2246, 2247, 2248, 2249, 2250, 2251, 2252, 2253, 2254, 2255, 2256, 2257, 2258, 2259, 2260, 2261, 2262, 2263, 2264, 2265, 2266, 2267, 2268, 2269, 2270, 2271, 2272, 2273, 2274, 2275, 2276, 2277, 2278, 2279, 2280, 2281, 2282, 2283, 2284, 2285, 2286, 2287, 2288, 2289, 2290, 2291, 2292, 2293, 2294, 2295, 2296, 2297, 2298, 2299, 2300, 2301, 2302, 2303, 2304, 2305, 2306, 2307, 2308, 2309, 2310, 2311, 2312, 2313, 2314, 2315, 2316, 2317, 2318, 2319, 2320, 2321, 2322, 2323, 2324, 2325, 2326, 2327, 2328, 2329, 2330, 2331, 2332, 2333, 2334, 2335, 2336, 2337, 2338, 2339, 2340, 2341, 2342, 2343, 2344, 2345, 2346, 2347, 2348, 2349, 2350, 2351, 2352, 2353, 2354, 2355, 2356, 2357, 2358, 2359, 2360, 2361, 2362, 2363, 2364, 2365, 2366, 2367, 2368, 2369, 2370, 2371, 2372, 2373, 2374, 2375, 2376, 2377, 2378, 2379, 2380, 2381, 2382, 2383, 2384, 2385, 2386, 2387, 2388, 2389, 2390, 2391, 2392, 2393, 2394, 2395, 2396, 2397, 2398, 2399, 2400, 2401, 2402, 2403, 2404, 2405, 2406, 2407, 2408, 2409, 2410, 2411, 2412, 2413, 2414, 2415, 2416, 2417, 2418, 2419, 2420, 2421, 2422, 2423, 2424, 2425, 2426, 2427, 2428, 2429, 2430, 2431, 2432, 2433, 2434, 2435, 2436, 2437, 2438, 2439, 2440, 2441, 2442, 2443, 2444, 2445, 2446, 2447, 2448, 2449, 2450, 2451, 2452, 2453, 2454, 2455, 2456, 2457, 2458, 2459, 2460, 2461, 2462, 2463, 2464, 2465, 2466, 2467, 2468, 2469, 2470, 2471, 2472, 2473, 2474, 2475, 2476, 2477, 2478, 2479, 2480, 2481, 2482, 2483, 2484, 2485, 2486, 2487, 2488, 2489, 2490, 2491, 2492, 2493, 2494, 2495, 2496, 2497, 2498, 2499, 2500, 2501, 2502, 2503, 2504, 2505, 2506, 2507, 2508, 2509, 2510, 2511, 2512, 2513, 2514, 2515, 2516, 2517, 2518, 2519, 2520, 2521, 2522, 2523, 2524, 2525, 2526, 2527, 2528, 2529, 2530, 2531, 2532, 2533, 2534, 2535, 2536, 2537, 2538, 2539, 2540, 2541, 2542, 2543, 2544, 2545, 2546, 2547, 2548, 2549, 2550, 2551, 2552, 2553, 2554, 2555, 2556, 2557, 2558, 2559, 2560, 2561, 2562, 2563, 2564, 2565, 2566, 2567, 2568, 2569, 2570, 2571, 2572, 2573, 2574, 2575, 2576, 2577, 2578, 2579, 2580, 2581, 2582, 2583, 2584, 2585, 2586, 2587, 2588, 2589, 2590, 2591, 2592, 2593, 2594, 2595, 2596, 2597, 2598, 2599, 2600, 2601, 2602, 2603, 2604, 2605, 2606, 2607, 2608, 2609, 2610, 2611, 2612, 2613, 2614, 2615, 2616, 2617, 2618, 2619, 2620, 2621, 2622, 2623, 2624, 2625, 2626, 2627, 2628, 2629, 2630, 2631, 2632, 2633, 2634, 2635, 2636, 2637, 2638, 2639, 2640, 2641, 2642, 2643, 2644, 2645, 2646, 2647, 2648, 2649, 2650, 2651, 2652, 2653, 2654, 2655, 2656, 2657, 2658, 2659, 2660, 2661, 2662, 2663, 2664, 2665, 2666, 2667, 2668, 2669, 2670, 2671, 2672, 2673, 2674, 2675, 2676, 2677, 2678, 2679, 26



▶ JOIN THE EXPERTS AT THE

PHOTO DU ET

100

A day's work in the kitchen, which turns up and jumbles around the school lunch plan for the week. Care values improved for lunch in a moment.

Presented by author at the 2008

► Journal of Management Education 35(10)

100

The members of *Myers' Mystery* are assigned to teams of the Camp of Education. Members are encouraged to move back if his idea in that manner. They were assigned to participate for 100.

1998, 1999, 2000, 2001, 2002, 2003, 2004, 2005, 2006, 2007, 2008, 2009, 2010, 2011, 2012, 2013, 2014, 2015, 2016, 2017, 2018, 2019, 2020, 2021, 2022, 2023, 2024, 2025, 2026, 2027, 2028, 2029, 2030, 2031, 2032, 2033, 2034, 2035, 2036, 2037, 2038, 2039, 2040, 2041, 2042, 2043, 2044, 2045, 2046, 2047, 2048, 2049, 2050, 2051, 2052, 2053, 2054, 2055, 2056, 2057, 2058, 2059, 2060, 2061, 2062, 2063, 2064, 2065, 2066, 2067, 2068, 2069, 2070, 2071, 2072, 2073, 2074, 2075, 2076, 2077, 2078, 2079, 2080, 2081, 2082, 2083, 2084, 2085, 2086, 2087, 2088, 2089, 2090, 2091, 2092, 2093, 2094, 2095, 2096, 2097, 2098, 2099, 2100, 2101, 2102, 2103, 2104, 2105, 2106, 2107, 2108, 2109, 2110, 2111, 2112, 2113, 2114, 2115, 2116, 2117, 2118, 2119, 2120, 2121, 2122, 2123, 2124, 2125, 2126, 2127, 2128, 2129, 2130, 2131, 2132, 2133, 2134, 2135, 2136, 2137, 2138, 2139, 2140, 2141, 2142, 2143, 2144, 2145, 2146, 2147, 2148, 2149, 2150, 2151, 2152, 2153, 2154, 2155, 2156, 2157, 2158, 2159, 2160, 2161, 2162, 2163, 2164, 2165, 2166, 2167, 2168, 2169, 2170, 2171, 2172, 2173, 2174, 2175, 2176, 2177, 2178, 2179, 2180, 2181, 2182, 2183, 2184, 2185, 2186, 2187, 2188, 2189, 2190, 2191, 2192, 2193, 2194, 2195, 2196, 2197, 2198, 2199, 2200, 2201, 2202, 2203, 2204, 2205, 2206, 2207, 2208, 2209, 2210, 2211, 2212, 2213, 2214, 2215, 2216, 2217, 2218, 2219, 2220, 2221, 2222, 2223, 2224, 2225, 2226, 2227, 2228, 2229, 2230, 2231, 2232, 2233, 2234, 2235, 2236, 2237, 2238, 2239, 2240, 2241, 2242, 2243, 2244, 2245, 2246, 2247, 2248, 2249, 2250, 2251, 2252, 2253, 2254, 2255, 2256, 2257, 2258, 2259, 2260, 2261, 2262, 2263, 2264, 2265, 2266, 2267, 2268, 2269, 2270, 2271, 2272, 2273, 2274, 2275, 2276, 2277, 2278, 2279, 2280, 2281, 2282, 2283, 2284, 2285, 2286, 2287, 2288, 2289, 2290, 2291, 2292, 2293, 2294, 2295, 2296, 2297, 2298, 2299, 2300, 2301, 2302, 2303, 2304, 2305, 2306, 2307, 2308, 2309, 2310, 2311, 2312, 2313, 2314, 2315, 2316, 2317, 2318, 2319, 2320, 2321, 2322, 2323, 2324, 2325, 2326, 2327, 2328, 2329, 2330, 2331, 2332, 2333, 2334, 2335, 2336, 2337, 2338, 2339, 2340, 2341, 2342, 2343, 2344, 2345, 2346, 2347, 2348, 2349, 2350, 2351, 2352, 2353, 2354, 2355, 2356, 2357, 2358, 2359, 2360, 2361, 2362, 2363, 2364, 2365, 2366, 2367, 2368, 2369, 2370, 2371, 2372, 2373, 2374, 2375, 2376, 2377, 2378, 2379, 2380, 2381, 2382, 2383, 2384, 2385, 2386, 2387, 2388, 2389, 2390, 2391, 2392, 2393, 2394, 2395, 2396, 2397, 2398, 2399, 2400, 2401, 2402, 2403, 2404, 2405, 2406, 2407, 2408, 2409, 2410, 2411, 2412, 2413, 2414, 2415, 2416, 2417, 2418, 2419, 2420, 2421, 2422, 2423, 2424, 2425, 2426, 2427, 2428, 2429, 2430, 2431, 2432, 2433, 2434, 2435, 2436, 2437, 2438, 2439, 2440, 2441, 2442, 2443, 2444, 2445, 2446, 2447, 2448, 2449, 2450, 2451, 2452, 2453, 2454, 2455, 2456, 2457, 2458, 2459, 2460, 2461, 2462, 2463, 2464, 2465, 2466, 2467, 2468, 2469, 2470, 2471, 2472, 2473, 2474, 2475, 2476, 2477, 2478, 2479, 2480, 2481, 2482, 2483, 2484, 2485, 2486, 2487, 2488, 2489, 2490, 2491, 2492, 2493, 2494, 2495, 2496, 2497, 2498, 2499, 2500, 2501, 2502, 2503, 2504, 2505, 2506, 2507, 2508, 2509, 2510, 2511, 2512, 2513, 2514, 2515, 2516, 2517, 2518, 2519, 2520, 2521, 2522, 2523, 2524, 2525, 2526, 2527, 2528, 2529, 2530, 2531, 2532, 2533, 2534, 2535, 2536, 2537, 2538, 2539, 2540, 2541, 2542, 2543, 2544, 2545, 2546, 2547, 2548, 2549, 2550, 2551, 2552, 2553, 2554, 2555, 2556, 2557, 2558, 2559, 2560, 2561, 2562, 2563, 2564, 2565, 2566, 2567, 2568, 2569, 2570, 2571, 2572, 2573, 2574, 2575, 2576, 2577, 2578, 2579, 2580, 2581, 2582, 2583, 2584, 2585, 2586, 2587, 2588, 2589, 2590, 2591, 2592, 2593, 2594, 2595, 2596, 2597, 2598, 2599, 2600, 2601, 2602, 2603, 2604, 2605, 2606, 2607, 2608, 2609, 2610, 2611, 2612, 2613, 2614, 2615, 2616, 2617, 2618, 2619, 2620, 2621, 2622, 2623, 2624, 2625, 2626, 2627, 2628, 2629, 2630, 2631, 2632, 2633, 2634, 2635, 2636, 2637, 2638, 2639, 2640, 2641, 2642, 2643, 2644, 2645, 2646, 2647, 2648, 2649, 2650, 2651, 2652, 2653, 2654, 2655, 2656, 2657, 2658, 2659, 2660, 2661, 2662, 2663, 2664, 2665, 2666, 2667, 2668, 2669, 2670, 2671, 2672, 2673, 2674, 2675, 2676, 2677, 2678, 2679, 26

**JOIN GROTTO THE FASTEST GROWING MASONIC
BODY. ALL FUN AND FOLIC WITH WIFE FRIENDLY
ACTIVITES. LOW DUES- MEETING 3RD WEDNESDAY
NIGHTS AT MERCHANTVILLE TEMPLE 7PM.**



I WANT YOU

FOR SIMBA GROTTTO

MYSTIC ORDER OF VEILED PROPHETS OF THE ENCHANTED REALM

Write to Keith, at simbagrotto606@gmail.com, for an application TODAY!

SEE US ON FACEBOOK- "SIMBAGROTT0606"

DeMolay Can Help!

As part of the Masonic family, Moorestown-Excelsior Chapter Order of DeMolay is available to support your activities, whether you are a Masonic Lodge, a Chapter of the Eastern Star, or an Amaranth Court.



- **Need Meal Service for a special Meeting, an Installation, a Table Lodge? Don't sweat it we can handle it.**
- **Need a program for your meetings? We have a variety of presentations to inform and entertain:**
 - ◆ **Ceremony of Lights — An explanation of a DeMolay's seven cardinal virtues. Appropriate for any meeting.**
 - ◆ **Flower Talk w/Mother's Watch — A talk geared to honor mothers — great presentation for May and Mother's Day, or anytime.**
 - ◆ **Father's Talk — A talk geared to honor fathers — great presentation for June and Father's Day, or any month.**
 - ◆ **Shield Talk — An explanation of the emblem of our order that breaks down the emblem piece by piece. An excellent presentation anytime.**
 - ◆ **History Talk — A presentation on the persecution of Jacques DeMolay and how his namesake Order came to be. Excellent for any meeting or occasion.**

We want to grow DeMolay, and it's younger affiliate body, Squires, for the benefit of young men everywhere. If you know a young man between the ages of 9 to 21, who would like to learn life lessons, develop leadership skills, make life-long friends, and have a good time, then DeMolay & Squires are the Organizations for them.

Contact: RW Glenn E. Latshaw at bigdadyglenn@aol.com

New Jersey Lodge of Masonic Research and Education



- Are you looking for more “light” in Masonry?
- Do you seek the challenges of Masonic scholarship?
- Do you enjoy crafting and presenting your own work?
- Do you appreciate the fellowship of like-minded brothers?



Join L.O.R.E.

The New Jersey Lodge of Masonic Research and Education No. 1786

The purpose of the New Jersey Lodge of Masonic Research and Education is to foster the education of the Craft at large through prepared research and open discussion of topics concerning Masonic history, symbolism, philosophy, and current events.

L.O.R.E. meets on the second Saturdays of March, June, September and December at Union Lodge No. 19, 60 Cedar Avenue, North Brunswick, New Jersey
To learn more, visit our website at <http://njlore1786.org>

All Master Masons are welcome at our meetings!

Entertainment

Puzzle Pages



courtesy of RW Bro. Gene Fricks

SUDOKU

Enter the digits 1-9 in each of the small boxes so that no digit is repeated in any row, column, or 3 x 3 box. Sudoku is an exercise in pure logic and deduction—always solvable by pure reasoning. Success by guessing or trial and error misses the point of the exercise. On a difficulty scale of 1 to 5 (easy to hard) this Sudoku is rated as 4 (medium-hard) in difficulty.

	5							8
			2		4	3	5	
9								
	7	8	1	4				2
2				5				
						9		4
	3	1					6	
					6		8	
		6	3	2	5			

MASONIC CRYPTOQUOTE

Solution will appear in the next issue.

“SFG LDXCB VR RUGGLDEVPUJ”
 SDZGE VP D EMGBCDY LGDPCPX
 HFGP VPG BVPECNGUE SFG
 PALKGU VR MUVRGEECVPDY DPN
 DLDSGAU LDXCBCDPE HFV FDTG
 KGGP LGLKGUE VR SFG DPBCGPS
 BUDRS.—HK LDUSCP KVXDUNAE

Puzzle Solutions

SUDOKU

1	5	2	6	3	7	4	9	8
8	6	7	2	9	4	3	5	1
9	4	3	5	8	1	6	2	7
6	7	8	1	4	9	5	3	2
2	9	4	7	5	3	8	1	6
3	1	5	8	6	2	9	7	4
4	3	1	9	7	8	2	6	5
5	2	9	4	1	6	7	8	3
7	8	6	3	2	5	1	4	9

FEBRUARY CRYPTOQUOTE

Those people who
 think they know
 everything are a
 great annoyance to
 those of us who do.



Isaac Asimov